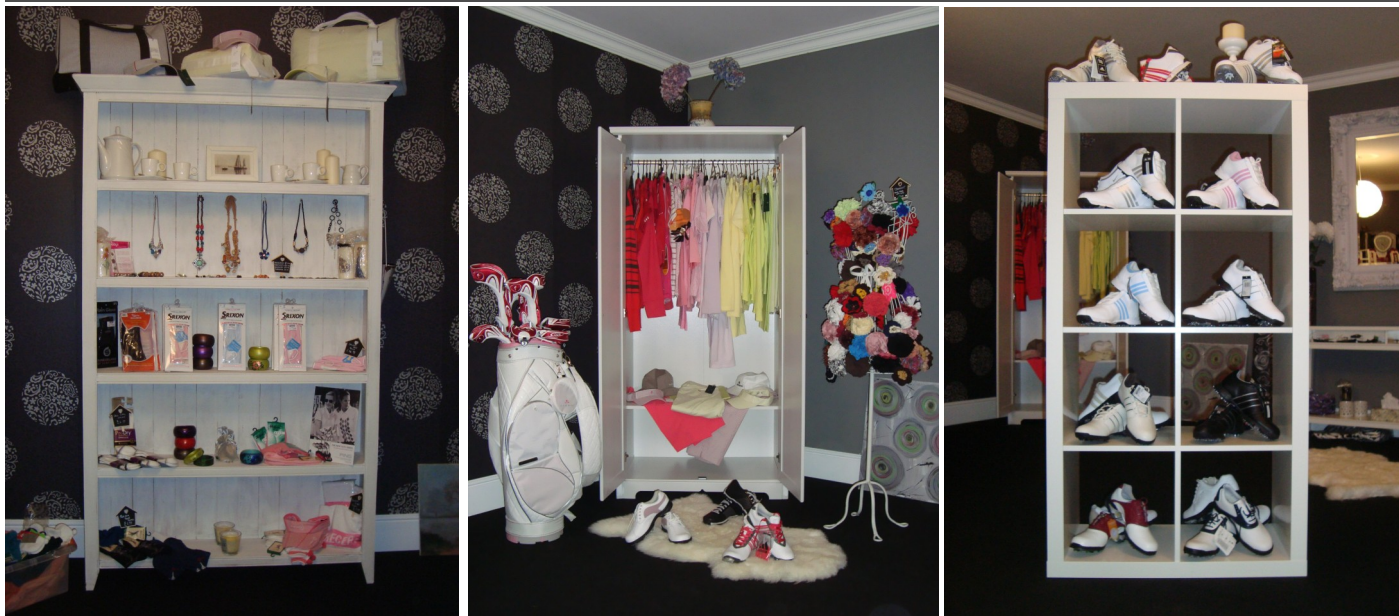


New Ladies Golf Boutique Comes To Lutterworth



Lady golfers in Leicestershire will be pleased at the news of a new "Ladies Golf Boutique" recently opened at Lutterworth Golf Club. Leanne Bayliss the boutique owner successfully opened the boutique in September of this year, stocking all leading brands such as, Ping, Galvin Green, Taylor Made, Adidas and many more.. The boutique is not your average golf pro shop, this place oozes style and sophistication. It caters for all lady golfers and is well worth a visit. The boutique offers you clothing, shoes, accessories and of course golf clubs too. To my knowledge this is the first of its kind in Leicestershire and a welcome addition. To celebrate the successful launch of the boutique Leanne is going to be holding a "Ladies Festive Day & Fashion Show" at Lutterworth golf club on Thursday the 9th December. This will give you the opportunity to view the new 2011 Spring/Summer ranges from many of our top brands and also the opportunity to place orders too. Anyone placing an order will receive a 15% discount on the day. There will be two catwalk performances one at 2.45 pm and another at 7.30 pm, giving everyone the opportunity to view everything. Tickets for the event will be £2.00 each and all proceeds will be donated to the Lady Captains Charity.

For more information on the boutique or the festive fashion show please contact Leanne on 01455557199 or alternatively you can email on info@ladygolferuk.com



Ladies Golf Boutique

Lutterworth Golf Club, Rugby Road Lutterworth, Leicestershire, LE17 4HN
Contact Leanne on tel: 01455 557199, mob: 07983548909, email: info@ladygolferuk.com